



**THE WHITE STAR LINE
LADIES AUXILIARY FASHION COMMITTEE
IS PLEASED TO PRESENT:**

MEN'S FASHIONS OF THE RAGTIME ERA

**APPROPRIATE ATTIRE FOR THE
TITANIC CENTENNIAL RAGTIME DANCE WEEKEND**

TITANIC ERA BALL

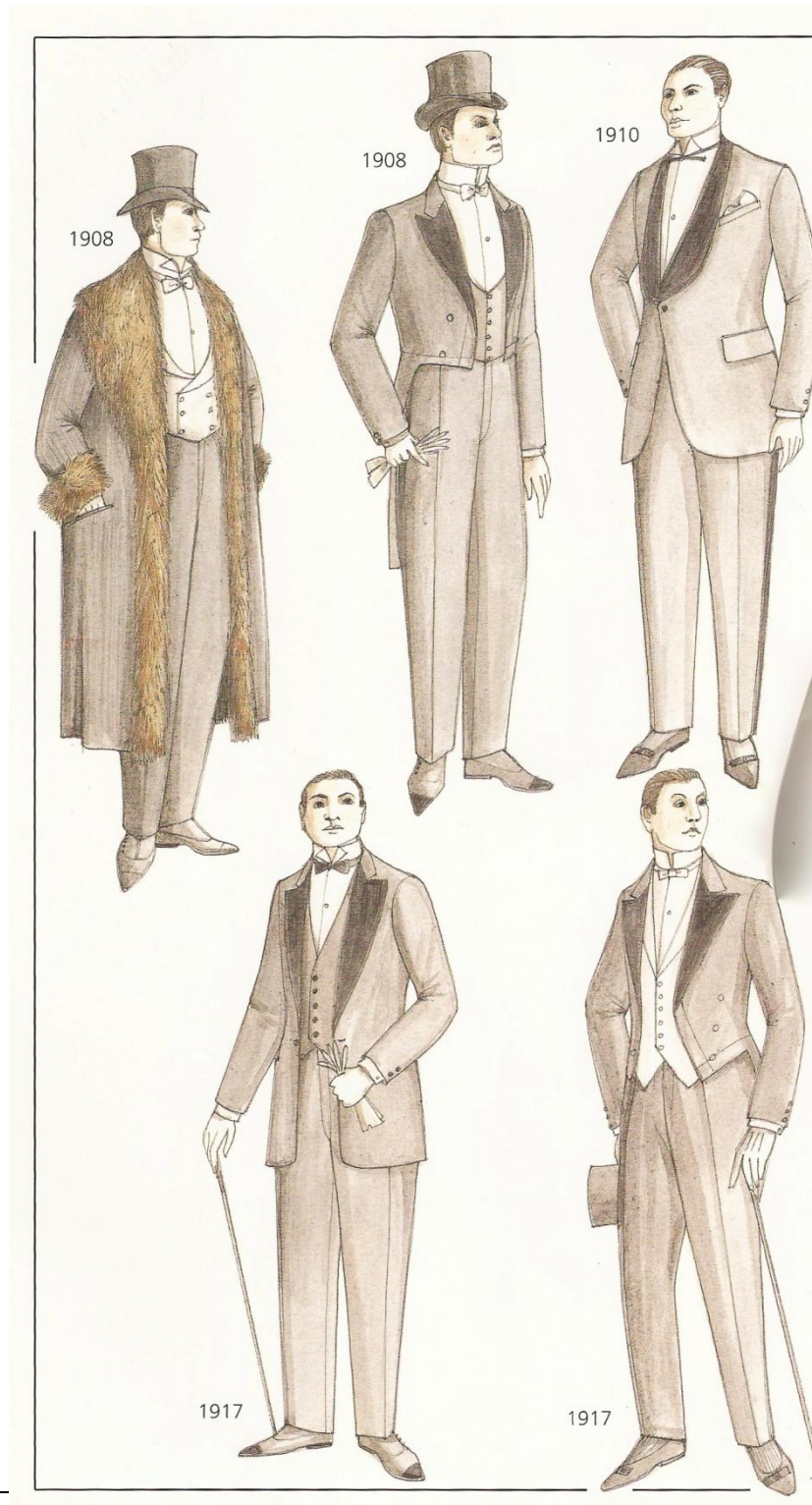


High Park Curling and Lawn Bowling Club, Indian Road, Opening Ball,
December 15, 1911



FIRST CLASS PASSENGERS: EVENING WEAR

- Dark tail coat or tuxedo jacket.
- White formal shirts can have wing tip collars.
- Vest either black or white; no cummerbunds
- Bow ties either white or black
- White gloves add the final touch of formality
- Top hat¹



¹ Derived from Vintage Victorian: Mens' Evening Dress for the Ragtime Era. 1910-1920.



THIRD CLASS: DAY WEAR

- Tweeds, plaids, 3-piece suits with a vest with lapels
- White shirt
- Bow tie or narrow tie
- Or a morning coat, striped pants, cane, bowler







CREW

Service Dress:

- Visor cap
- Black double-breasted jacket
- Black pants
- White shirt
- Black necktie
- Black shoes



Tropical Dress:

- Single breasted white jacket with high “Russian” collar
- White pants
- Shoulder boards were worn with this instead of cuff braid on the sleeves
- No tie
- The only shirt would have been an undershirt





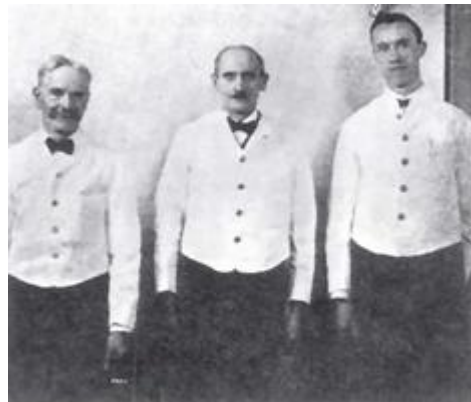
Mess Dress:

- Tuxedo, with rank braid on the cuffs.
- Medals
- White or black vest
- Tuxedo shirt
- Black or white bow tie²



Waiter:

- Black pants
- White shirt
- White vest
- Black bow tie



² Derived from John Hemmert (2005) White Star Line Officer's Uniform Circa 1912 *ET Research* (ref: #4468, accessed 16th October 2011 03:04:18 PM)

URL : <http://www.encyclopedia-titanica.org/white-star-line-uniform-1912.html>.